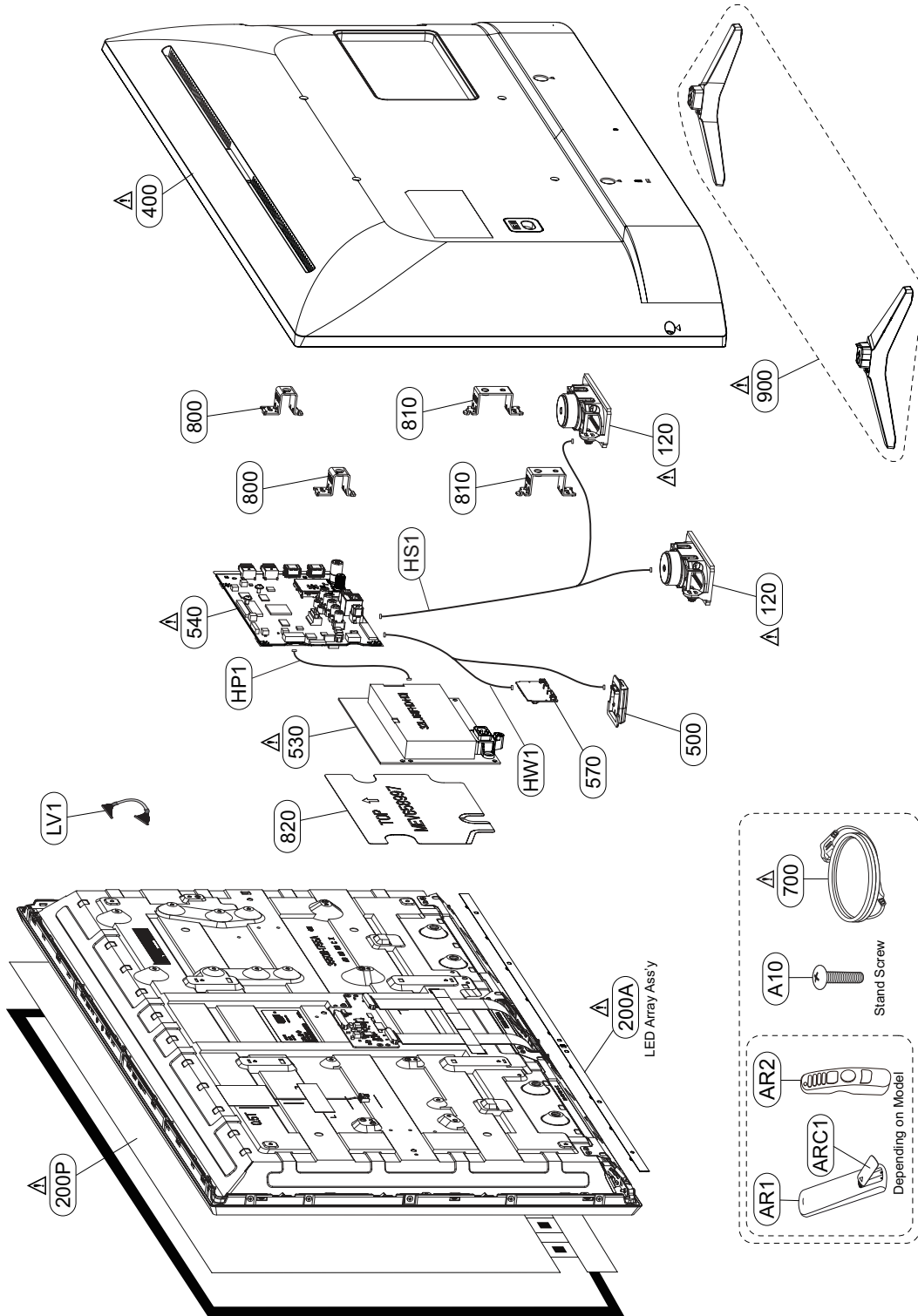


# EXPLODED VIEW (SET)

## IMPORTANT SAFETY NOTICE

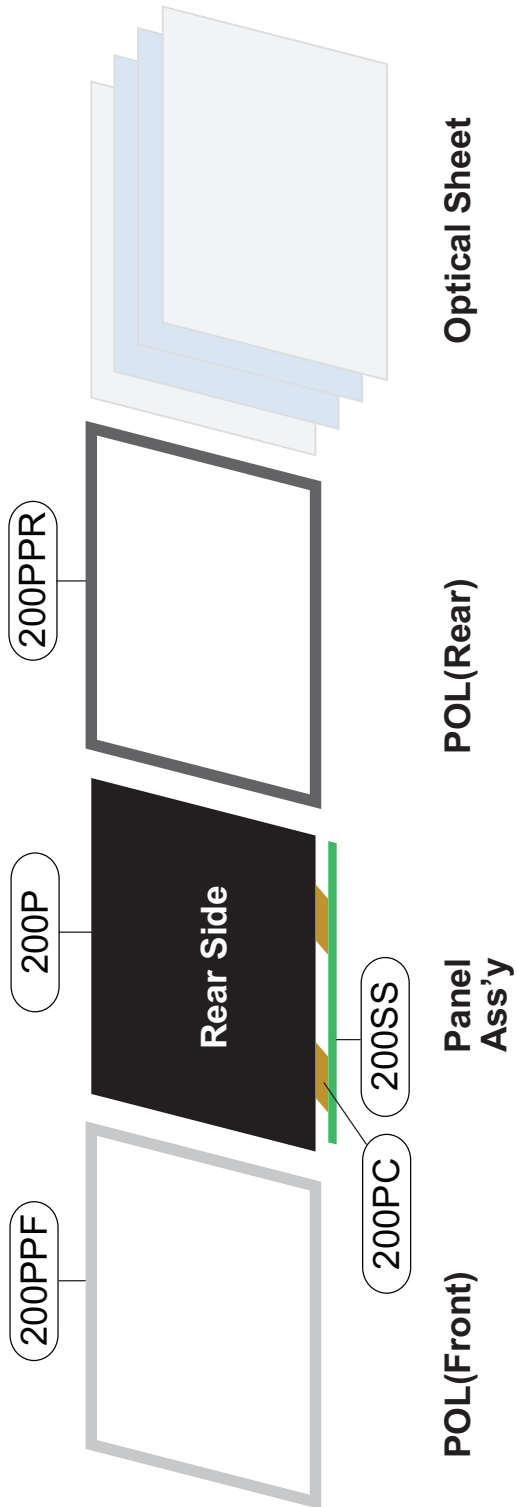
Many electrical and mechanical parts in this chassis have special safety-related characteristics. These parts are identified by  $\Delta$  in the EXPLODED VIEW. It is essential that these special safety parts should be replaced with the same components as recommended in this manual to prevent Shock, Fire, or other Hazards. Do not modify the original design without permission of manufacturer.



# EXPLODED VIEW (MODULE)

**IMPORTANT NOTICE**

**MRC use only**  
 \* MRC : Module Repair Center



Item	Inch Location#	Status
Panel Ass'y	200P	32Inch
POL(Front)	200PPF	
POL(Rear)	200PPR	
COF	200PC	
Source PCB	200SS	